



Call Now (941) 957-8055

# Our Getting Started Guide Kitchen and Bathroom Renovation

Our Process, 7 Questions, Decisions You Will Have to Make,  
& Our Top Styles



## Our Process

1 to 2 week turnaround times

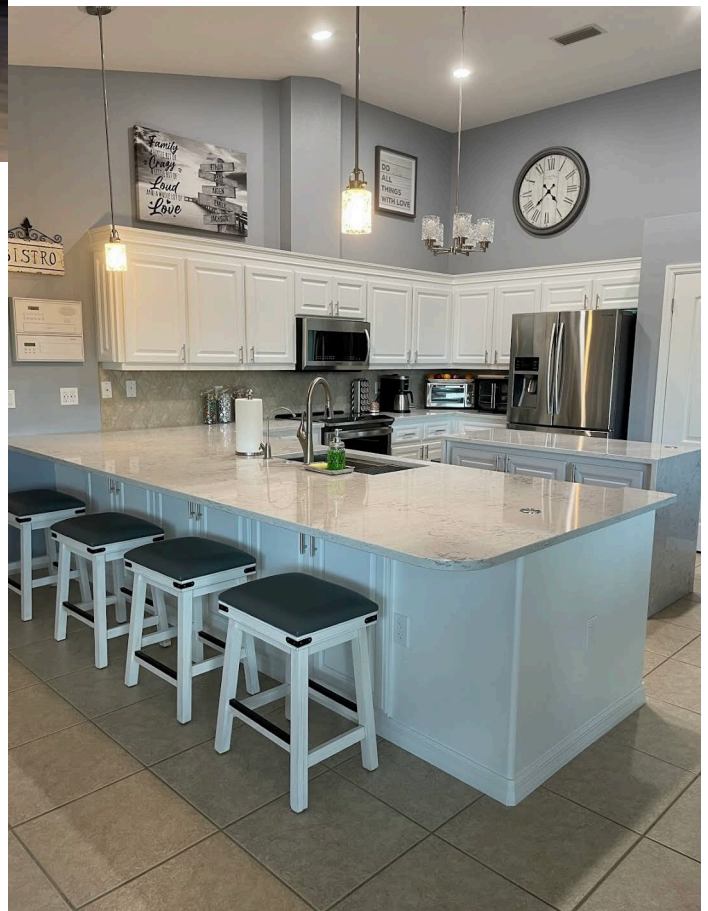
Learn about our:

Expert Process

Top of the Line Equipment

Protecting You and Your Home

No Sub-Contracting



## Top Questions

Find out why people choose us  
Their most common questions &  
How our team goes above and  
beyond to give you beautiful  
durable cabinets for years to  
come.

## Our Process-

Typical turnaround times are 1 to 2 weeks.

- It all starts with a call, we get some details and schedule a free in home or virtual quote.
- Finalize the quote, schedule the takedown to bring doors back to Florida's Finest Cabinets shop.

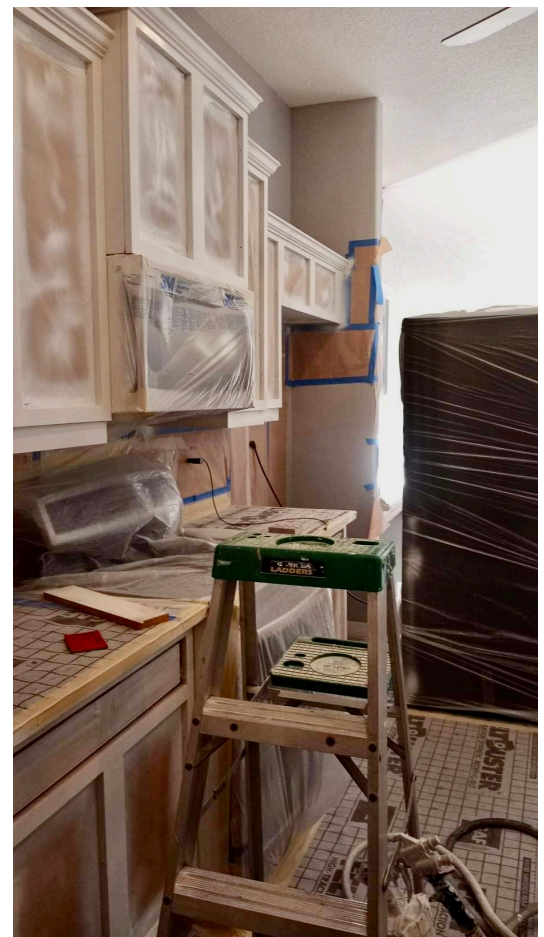
### In home process to paint frames(3days):

Day 1: We bring your doors back to our shop. We begin to prep the areas to be painted. A spill and tear proof synthetic roofing material is used to cover floors and countertops. Cabinet and drawer openings are sealed with plastic to ensure complete protection from possible contaminants.

Day 2: Create a fully ventilated spray tent with an industrial grade vent fan. Any potential fumes are trapped in the tent and vented from the home. Using HEPA certified equipment we will clean and sand the frames, apply one to two coats of primer.

Between each application all surfaces are sanded and wiped clean.

Day 3: Apply topcoat, remove prep, and clean area. Ensure customer satisfaction.





Call Now (941) 957-8055

### Doors and Drawers Process:

-Depending on whether new doors are ordered or existing doors are refinished timelines vary. We schedule everything to make sure the time between take down and installation is as little as possible.

Tier 1(Refinishing): If existing doors are kept we will follow the same process as is used on the frames at our shop. If you chose to have handle holes filled a wooden dowel is sealed in with BONDO Industrial grade cabinet wood filler.

Tier 2(Refacing): If new doors are being ordered it takes about 2 weeks. Doors can be ordered in a variety of styles, check out our most common styles below. Doors are ordered either raw, and finished in our shop, or painted. Acrylic doors can be ordered.

### Installation Process(1day):

Day 1: Install doors, drawers and any new hardware, make necessary adjustments and ensure customer satisfaction with results.





Call Now (941) 957-8055

## Top Questions

1. Q. Do we need to empty our cabinets before takedown?  
A. No, we ask that you leave 2 inches of clearance for prep work.
2. Q. Will I have access to my appliances?  
A. Yes, the only time you won't have access is while we are actively spraying.
3. Q. Will dust from sanding enter my AC unit?  
A. No, we will seal off all vents in the kitchen and we will use a HEPA certified sander that traps 90% of dust. Any remaining will be wiped with a cleaning solution.
4. Q. Does this process make my house smell?  
A. A small amount of smell should be expected but compared to most painting projects it is very minimal. We build a tent and ventilate the areas where we are working.
5. Q. What is the total cure time for my new cabinets?  
A. The paint will be dry and appear cured when we leave, however total cure time is around 2 weeks, during that time painted areas should be used lightly.
6. Q. How should I clean my finished kitchen?  
A. Warm water with a couple drops of dawn is our recommendation. If you have a cleaner you would like to use we recommend trying on a small non-visible area. Harsh chemicals can eat away at paint so natural is recommended.
7. Q. How long is this process?  
A. The entire process takes 2 weeks but we aren't in your home everyday. Typically 3 to 5 days are spent in your home doing the takedown, frames, and installation.



Call Now (941) 957-8055

## Our Top Styles



Style:  
Simple  
Shaker



Style:  
Seamless  
Shaker



Style:  
Benton  
Square



Style:  
Benton  
Brow



Style:  
Austin



Style:  
Easton

## Choices You Will Have to Make

1. Whether you are keeping your existing doors and drawers or refacing.
2. If you choose to reface cabinets what style and finish you would like.
3. Type of hardware, do you want upgrades such as soft close hinges, soft close guide-rails for drawers.
4. Do you want to add aesthetic features like crown and light-rail, etc.?
5. Adding functional upgrades like storage systems, pullout drawers, etc.